



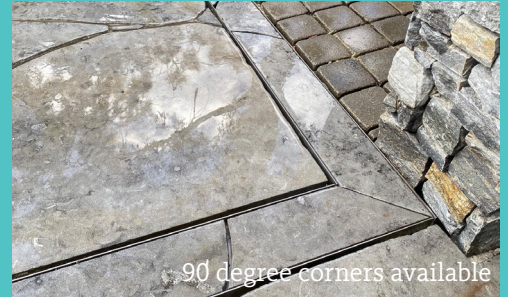
See the full range

# Modular Linear Drain Cover

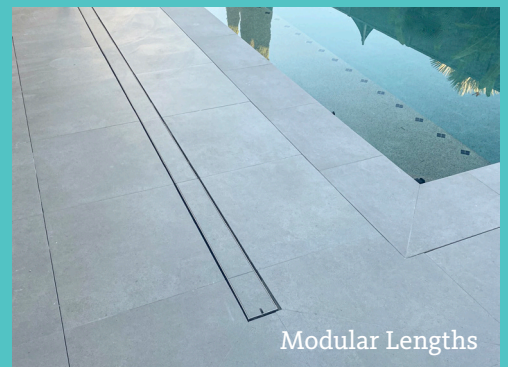
Compatible with 2 popular plastic channels (Everhard ED 125mm wide) and (Rein SM 110mm wide)



Discreet stainless steel stone/tile drain cover available for all popular stone thicknesses. (12, 20, 30mm)



90 degree corners available



Modular Lengths

Modular @ 1210mm or cut down



3 popular depths 12, 20 & 30mm

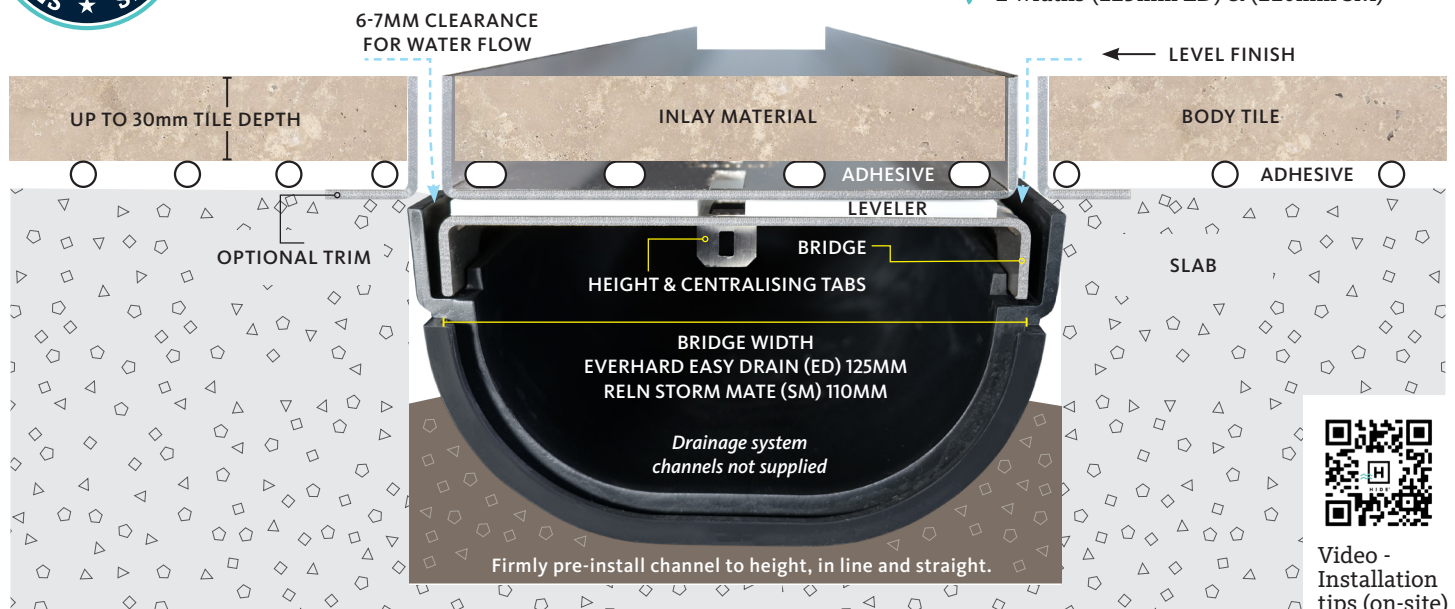


Mitred corner pack available

## Advanced System

NO FALL REQUIRED

- ✓ Adjustable height
- ✓ Adjustable clearances
- ✓ Centralising tabs
- ✓ Removable tray
- ✓ Site assemble
- ✓ Easy channel installation or your recess
- ✓ No earthing required
- ✓ High water flow with channel depth options
- ✓ 100% external system
- ✓ 2 widths (125mm ED) & (110mm SM)



Video -  
Installation  
tips (on-site)



# MODULAR EXTERNAL LINEAR DRAIN COVERS



EXTERNAL  
MARINE GRADE

## SELECT FROM 3 INLAY THICKNESSES 12, 20 & 30mm KITS

(Drain channel not supplied) 40mm depth available for Concrete Wet-Pour or Pavers  
Everhard Channel (ED) 125mm or Reln Channel (SM) 110mm wide



**NO ACID / CHEMICAL WASH CONTACT**  
BY CONTRACTOR OR HOMEOWNER - EVER



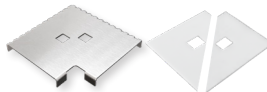
**SUITABLE FOR PEDESTRIAN**  
TRAFFIC ONLY



Linear Bridge & Leveler



(Optional  
Extended  
Bridge)



Corner Bridge & Leveler



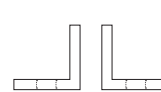
Key & Cutting Disk



End Cap Set



Adhesive



Trim

## LINEAR LID KIT

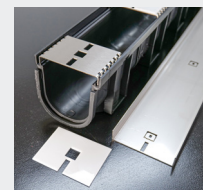
2 widths (125mm ED) & (110mm SM)

### 1210mm straight modular lengths

KIT	INLAY THICKNESS	PRODUCT CODE
10	8-12	HDCL1210-10 (ED or SM)
20	15-22	HDCL1210-20 (ED or SM)
30	25-32	HDCL1210-30 (ED or SM)

- 1 x linear lid
- 5 x linear bridges & levelers
- 2 x adhesive

• Available on request: Extended bridges. Adds 30mm height & cut down as required.

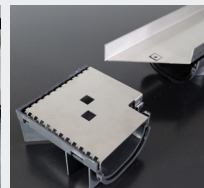
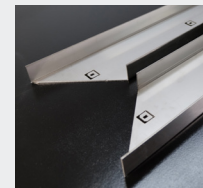


## MITRED CORNER KIT 2 x mitred 1210mm modular lengths

### 1210mm

KIT	INLAY THICKNESS	PRODUCT CODE
10	8-12	HDCLCN1210-10 (ED or SM)
20	15-22	HDCLCN1210-20 (ED or SM)
30	25-32	HDCLCN1210-30 (ED or SM)

- 1 x left hand mitred corner lids
- 1 x right hand mitred corner lids
- 8 x linear bridges & levelers
- 1 x corner bridge & leveler
- 4 x adhesive



## FINISHING KIT

KIT	PRODUCT CODE
10	HDCLF-10 (ED or SM)
20	HDCLF-20 (ED or SM)
30	HDCLF-30 (ED or SM)

- 2 x end caps
- 1 x access key
- 1 x stainless steel cutting disk

*This kit is required (one per install) and provides basic accessories including the access key. Additional end caps can be purchased (see below).*



## END CAPS

KIT	PRODUCT CODE
10	HDCLEC-10 (ED or SM)
20	HDCLEC-20 (ED or SM)
30	HDCLEC-30 (ED or SM)

Additional end caps if adding to each 1210mm length (Sets of 2)

*End Caps may be added to finish the outer ends of the entire job, or to finish off each 1210mm modular length. Dependent only on your finishing preference.*



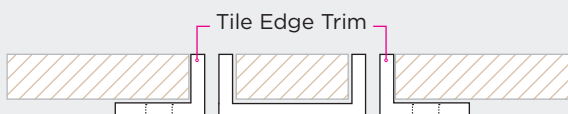
## TILE EDGE TRIM (Optional)

### 1210mm Edge Protector finish

TRIM KIT	PRODUCT CODE
10	HDCLT1210-10
20	HDCLT1210-20
30	HDCLT1210-30



2 x 1210mm trim, to suit either 12, 20, 30mm Lid  
Generic to either (ED or SM)



**HEAD OFFICE**  
26 Link Drive,  
Yatala, Qld, 4207

**P:** 07 3807 2551  
**M:** 0427 270 560  
**E:** admin@skimmerlids.com.au  
**W:** www.skimmerlids.com.au

@hideskimmerlids

PROUDLY DESIGNED &  
MANUFACTURED  
IN AUSTRALIA  
  
**SKIMMER LIDS**  
PTY LTD



Video - Components  
and assembly

TEC-LIN-TILE V2-2023