



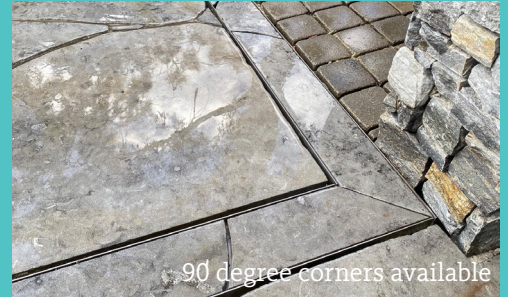
See the full range

Modular Linear Drain Cover

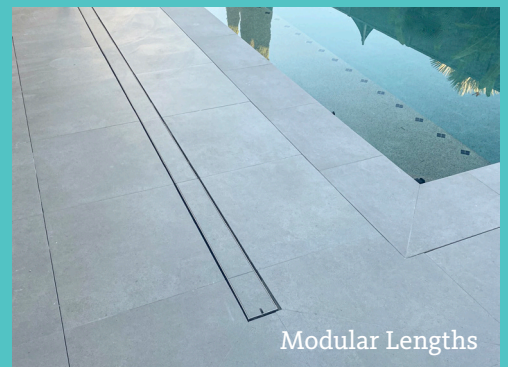
Compatible with 2 popular plastic channels (Everhard ED 125mm wide) and (Rein SM 110mm wide)



Discreet stainless steel stone/tile drain cover available for all popular stone thicknesses. (12, 20, 30mm)



90 degree corners available



Modular Lengths

Modular @ 1210mm or cut down



3 popular depths 12, 20 & 30mm

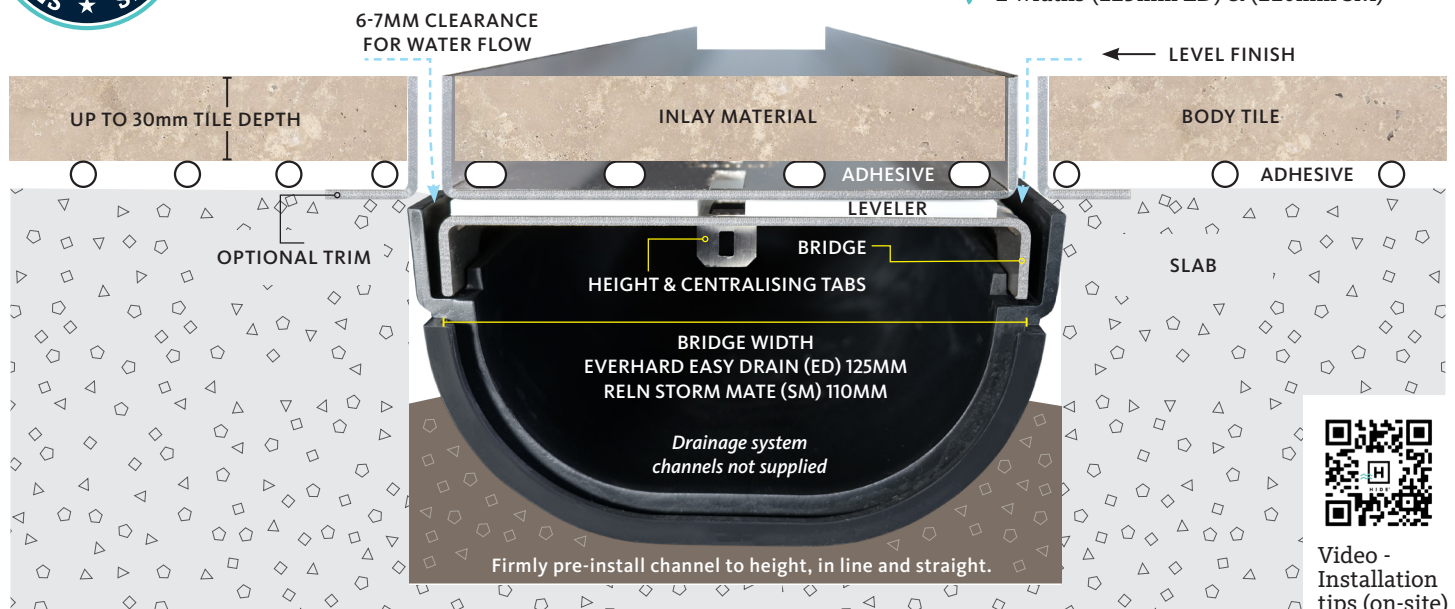


Mitred corner pack available

Advanced System

NO FALL REQUIRED

- ✓ Adjustable height
- ✓ Adjustable clearances
- ✓ Centralising tabs
- ✓ Removable tray
- ✓ Site assemble
- ✓ Easy channel installation or your recess
- ✓ No earthing required
- ✓ High water flow with channel depth options
- ✓ 100% external system
- ✓ 2 widths (125mm ED) & (110mm SM)





MODULAR EXTERNAL LINEAR DRAIN COVERS



EXTERNAL
MARINE GRADE

SELECT FROM 3 INLAY THICKNESSES 12, 20 & 30mm KITS

(Drain channel not supplied) 40mm depth available for Concrete Wet-Pour or Pavers
Everhard Channel (ED) 125mm or Reln Channel (SM) 110mm wide



NO ACID / CHEMICAL WASH CONTACT
BY CONTRACTOR OR HOMEOWNER - EVER



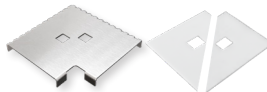
**SUITABLE FOR PEDESTRIAN
TRAFFIC ONLY**



Linear Bridge & Leveler



(Optional
Extended
Bridge)



Corner Bridge & Leveler



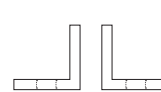
Key & Cutting Disk



End Cap Set



Adhesive



Trim

LINEAR LID KIT

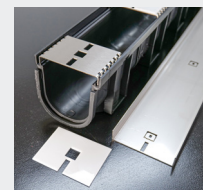
2 widths (125mm ED) & (110mm SM)

1210mm straight modular lengths

KIT	INLAY THICKNESS	PRODUCT CODE
10	8-12	HDCL1210-10 (ED or SM)
20	15-22	HDCL1210-20 (ED or SM)
30	25-32	HDCL1210-30 (ED or SM)

- 1 x linear lid
- 5 x linear bridges & levelers
- 2 x adhesive

• Available on request: Extended bridges. Adds 30mm height & cut down as required.

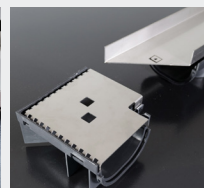
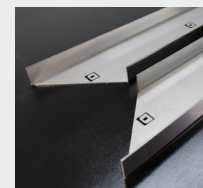


MITRED CORNER KIT 2 x mitred 1210mm modular lengths

1210mm

KIT	INLAY THICKNESS	PRODUCT CODE
10	8-12	HDCLCN1210-10 (ED or SM)
20	15-22	HDCLCN1210-20 (ED or SM)
30	25-32	HDCLCN1210-30 (ED or SM)

- 1 x left hand mitred corner lids
- 1 x right hand mitred corner lids
- 8 x linear bridges & levelers
- 1 x corner bridge & leveler
- 4 x adhesive



FINISHING KIT

KIT	PRODUCT CODE
10	HDCLF-10 (ED or SM)
20	HDCLF-20 (ED or SM)
30	HDCLF-30 (ED or SM)

- 2 x end caps
- 1 x access key
- 1 x stainless steel cutting disk

This kit is required (one per install) and provides basic accessories including the access key. Additional end caps can be purchased (see below).



END CAPS

KIT	PRODUCT CODE
10	HDCLEC-10 (ED or SM)
20	HDCLEC-20 (ED or SM)
30	HDCLEC-30 (ED or SM)

Additional end caps if adding to each 1210mm length (Sets of 2)

End Caps may be added to finish the outer ends of the entire job, or to finish off each 1210mm modular length. Dependent only on your finishing preference.



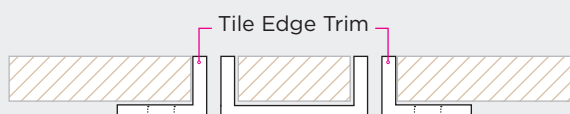
TILE EDGE TRIM (Optional)

1210mm Edge Protector finish

TRIM KIT	PRODUCT CODE
10	HDCLT1210-10
20	HDCLT1210-20
30	HDCLT1210-30



2 x 1210mm trim, to suit either 12, 20, 30mm Lid
Generic to either (ED or SM)



HEAD OFFICE
26 Link Drive,
Yatala, Qld, 4207

P: 07 3807 2551
M: 0427 270 560
E: admin@skimmerlids.com.au
W: www.skimmerlids.com.au

@hideskimmerlids

PROUDLY DESIGNED &
MANUFACTURED
IN AUSTRALIA

SKIMMER LIDS
PTY LTD



Video - Components
and assembly